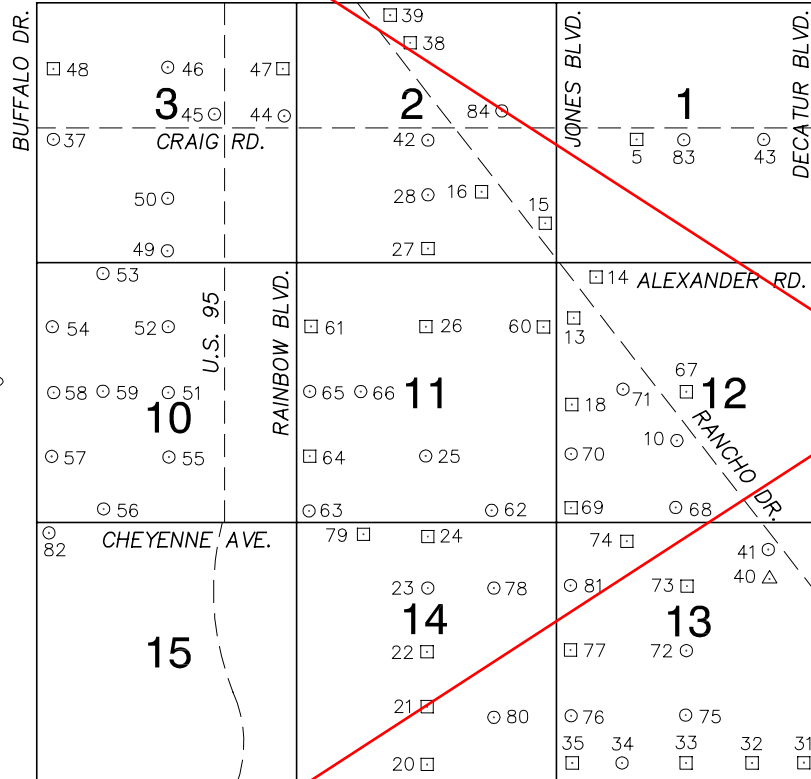


FOR REFERENCE ONLY

\*2018 BENCHMARK NETWORK ADJUSTMENT SUPERSEDES THE 2003 BENCHMARK BOOK

Township 20 South, Range 60 East  
Northeast Quarter

LONE MOUNTAIN RD.



SMOKE RANCH RD.

NORTH AMERICAN VERTICAL  
DATUM OF 1988  
- ALL ELEVATIONS IN METERS -

No.	STATION	ELEVATION (METERS)	DESCRIPTION
1			LOST 2003
2			LOST 2003
3			LOST 2003
4			LOST 2003
5	7C00 1W6	685.516	F N D RIVET AND SQUARE ALUMINUM PLATE IN TOP OF CURB, SOUTHWEST CORNER OF CRAIG RD. AND LEON AVE. NEAR THE PC OF CRAIG RD.
6			LOST 2003
7			LOST 2003
8			LOST 2003
9			LOST 1992
10	8LV00 12S6	686.788	F N D CITY OF LAS VEGAS PIN AND PLATE IN TOP OF CURB, SOUTHWEST CORNER OF RANCHO DR. AND MICHAEL WAY NEAR THE PC OF RANCHO DR., "NOT STAMPED"
11			LOST 2003

CLARK COUNTY VERTICAL CONTROL v.2003

CLARK COUNTY SURVEYOR'S OFFICE  
5051 SOUTH PARADISE ROAD  
LAS VEGAS, NEVADA 89119  
(702) 455-0640

CONVERSION FACTOR:  
METERS X  $\left(\frac{3937}{1200}\right)$  = U.S. SURVEY FEET

REVISED 2003

SHEET  
1 of 5

20-60  
NE

**FOR REFERENCE ONLY**

**\*2018 BENCHMARK NETWORK ADJUSTMENT SUPERSEDES THE 2003 BENCHMARK BOOK**

No.	STATION	ELEVATION (METERS)	DESCRIPTION	No.	STATION	ELEVATION (METERS)	DESCRIPTION	
12			LOST 2003	25	5LV00 11S6	697.265	F N D CITY OF LAS VEGAS PIN AND PLATE IN TOP OF CURB, NORTHWEST CORNER OF TORREY PINES DR. AND BUCKSKIN AVE. NEAR THE PC OF TORREY PINES DR. "NOT STAMPED"	
13	7C00 12NW6	689.464	F N D RIVET AND SQUARE ALUMINUM PLATE IN TOP OF CURB, WEST SIDE OF RANCHO DR. NEAR THE NORTH END OF CRYSTAL PALACE SKATING CENTER, 3901 RANCHO DR.	26	5LV00 11N6	696.756	F N D CITY OF LAS VEGAS PIN AND PLATE IN TOP OF CURB, WEST SIDE OF TORREY PINES DR, JUST SOUTH OF CRESTFIELD AVE. AT 3764 TORREY PINES DR. "NOT STAMPED"	
14	7C00 12NWS	690.448	F N D RIVET AND SQUARE ALUMINUM PLATE IN TOP OF SOUTH END OF CONCRETE HEADWALL, 7' EAST OF EAST EO OF RANCHO DR. APPROX. 125' SOUTH OF THE JONES BLVD./ALEXANDER RD. SWITCHOVER ALIGNMENT.	27	7C00 2S4	696.648	F N D RIVET AND SQUARE ALUMINUM PLATE IN TOP OF CURB, NORTHEAST CORNER OF TORREY PINES DR. AND ALEXANDER RD. NEAR THE PC OF TORREY PINES DR.	
15	7C00 2SES	692.485	F N D RIVET AND SQUARE ALUMINUM PLATE IN TOP OF SOUTH END OF CONCRETE HEADWALL, 3.6' EAST OF EAST EO OF RANCHO DR. 450' NORTHWEST OF ALEXANDER RD.	28	5LV00 2S6	698.344	F N D CITY OF LAS VEGAS PIN AND PLATE IN TOP OF CURB, SOUTHEAST CORNER OF TORREY PINES DR. AND JORY TRAIL, NEAR THE PC OF TORREY PINES DR. "NOT STAMPED"	
16	7C00 2SE6	695.662	F N D RIVET AND SQUARE ALUMINUM PLATE IN TOP OF CURB, WEST SIDE OF RANCHO DR. JUST SOUTH OF THE NORTH DRIVEWAY GOING INTO UMC QUICK CARE CENTER, 0.3 MILES SOUTHEAST OF CRAIG RD.	29			LOST 2003	
17			LOST 2003	30			LOST 2003	
18	7C00 12W4	691.826	F N D RIVET AND SQUARE ALUMINUM PLATE IN TOP OF CURB, SOUTHEAST CORNER OF GOWAN RD. AND JONES BLVD. NEAR THE PC OF JONES BLVD.	31	8C00 13SES	672.267	F N D 2" DOME HEAD BRASS CAP REFERENCE MONUMENT IN TOP OF CURB, NORTHWEST CORNER OF SMOKE RANCH RD. AND DECATUR BLVD. NEAR 1/3 DELTA.	
19			LOST 2003	32	8C00 13SSE6	675.344	F N D 2" DOME HEAD BRASS CAP REFERENCE MONUMENT IN TOP OF CURB, NORTHWEST CORNER OF SMOKE RANCH RD. AND LEONARD LN.	
20	7C00 14S4	697.968	F N D RIVET AND SQUARE ALUMINUM PLATE IN TOP OF CURB, NORTHEAST CORNER OF TORREY PINES DR. AND SMOKE RANCH RD. NEAR THE PC OF TORREY PINES DR.	33	8C00 13S4	678.775	F N D 2" DOME HEAD BRASS CAP REFERENCE MONUMENT IN TOP OF CURB, NORTHEAST CORNER OF SMOKE RANCH RD. & MICHAEL WAY NEAR THE PC OF SMOKE RANCH RD.	
21	7C00 14S6	697.732	F N D RIVET AND SQUARE ALUMINUM PLATE IN TOP OF CURB, NORTHEAST CORNER OF TORREY PINES DR. AND URSUS DR. NEAR THE PC OF TORREY PINES DR.	34	1LV00 13SSW6	682.740	F N D CITY OF LAS VEGAS PIN AND PLATE IN TOP OF CURB, NORTHEAST CORNER OF SMOKE RANCH RD. AND WINWOOD ST. NEAR THE PC OF SMOKE RANCH RD., "NOT STAMPED"	
22	7C00 14C4	696.662	F N D RIVET AND SQUARE ALUMINUM PLATE IN TOP OF CURB, SOUTHEAST CORNER OF TORREY PINES DR. AND PEAK DR. NEAR THE PC OF TORREY PINES DR.	35	8C00 13SWS	688.714	F N D 2" DOME HEAD BRASS CAP REFERENCE MONUMENT, NORTHEAST CORNER OF SMOKE RANCH RD. AND JONES BLVD. NEAR THE PC OF SMOKE RANCH RD.	
23	1LV00 14N6	696.650	F N D CITY OF LAS VEGAS PIN AND PLATE IN TOP OF CURB, NORTHWEST CORNER OF TORREY PINES DR. AND BROOKS AVE. NEAR 1/2 DELTA, "NOT STAMPED"	<b>CLARK COUNTY VERTICAL CONTROL v.2003</b>				
24	7C00 14N4	697.022	F N D RIVET AND SQUARE ALUMINUM PLATE IN TOP OF CURB, SOUTHWEST CORNER OF TORREY PINES DR. AND CHEYENNE AVE. NEAR THE PC OF TORREY PINES DR.	CLARK COUNTY SURVEYOR'S OFFICE 5051 SOUTH PARADISE ROAD LAS VEGAS, NEVADA 89119 (702) 455-0640			CONVERSION FACTOR: METERS x $\left(\frac{3937}{1200}\right)$ = U.S. SURVEY FEET	
						REVISED 2003	SHEET 2 OF 5	<b>20-60 NE</b>

**FOR REFERENCE ONLY**

**\*2018 BENCHMARK NETWORK ADJUSTMENT SUPERSEDES THE 2003 BENCHMARK BOOK**

No.	STATION	ELEVATION (METERS)	DESCRIPTION	No.	STATION	ELEVATION (METERS)	DESCRIPTION
36			LOST 2003	48	1LV00 3NWW6	716.123	F N D CITY OF LAS VEGAS PIN AND PLATE IN TOP OF CURB, NORTHWEST CORNER OF BUFFALO DR. AND RED COACH AVE. NEAR THE PC OF RED COACH AVE.
37	1LV00 3W4	714.676	F N D CITY OF LAS VEGAS PIN AND PLATE IN ELECTRIC BASE, SOUTH SIDE OF CRAIG RD., 250' EAST OF BUFFALO DR.	49	1LV00 3S4	708.583	F N D CITY OF LAS VEGAS PIN AND PLATE IN TOP OF CURB, NORTHEAST CORNER OF ALEXANDER DR. AND TENAYA WAY NEAR 1/2 DELTA.
38	0C00 2NW6	705.010	F N D RIVET AND SQUARE ALUMINUM PLATE IN TOP OF CURB, NORTHWEST CORNER OF RANCHO DR. AND PAINTED DESERT DR. NEAR THE PC OF RANCHO DR.	50	6LV00 3S6	709.410	F N D CITY OF LAS VEGAS PIN AND PLATE IN TOP OF CURB, ON EAST SIDE OF TENAYA WAY ±400' NORTH OF LARKVALE WAY.
39	0C00 2NNW6	706.791	F N D RIVET AND SQUARE ALUMINUM PLATE IN TOP OF CURB, SOUTHEAST CORNER OF RANCHO DR. AND LONE MOUNTAIN RD. NEAR THE PC OF RANCHO DR.	51	9LV00 10C4	706.755	F N D CITY OF LAS VEGAS PIN AND PLATE IN TOP OF CURB, NORTHWEST CORNER OF GOWAN RD. AND TENAYA WAY NEAR THE PT OF TENAYA WAY.
40	U 398 1980	675.118	F N D USC&GS BRASS CAP, STAMPED "U-398 1980", IN PLASTIC WELL, 0.3 MILES NORTHWEST OF DECATUR BLVD., 124' WEST OF THE WEST EO OF RANCHO DR. 30.2' WEST OF THE SOUTHWEST CORNER OF A FENCE, 19' NORTH OF THE NORTH EDGE OF BUILDING, APT #1, RAINBOW APTS. AT 2951 RANCHO DR.	52	6LV00 10N6	708.550	F N D CITY OF LAS VEGAS PIN AND PLATE IN TOP OF CURB, WEST SIDE OF TENAYA WAY. ±375' NORTH OF MAYBROOK DR.
				53	1LV00 10NNW6	710.893	F N D CITY OF LAS VEGAS PIN AND PLATE IN TOP OF CURB, SOUTH SIDE OF ALEXANDER RD. ±30' EAST OF THE PIONEER WAY ALIGNMENT.
41	2LV00 13NE6	679.748	F N D CITY OF LAS VEGAS PIN AND PLATE IN TOP OF CURB, WEST SIDE OF RANCHO DR. 500' SOUTH OF CHEYENNE AVE. AT 3101 RANCHO DR.	54	8LV00 10NWW6	714.295	F N D CITY OF LAS VEGAS PIN AND PLATE IN TOP OF CURB, SOUTHEAST CORNER OF BUFFALO DR. AND GILMORE AVE. NEAR THE PC OF BUFFALO DR.
42	7C00 2C4 1997	699.778	S E T RIVET AND ROUND ALUMINUM PLATE IN TOP OF CURB, SOUTHWEST CORNER OF CRAIG RD. AND TORREY PINES DR. NEAR THE PC OF TORREY PINES DR.	55	6LV00 10S6	708.420	F N D CITY OF LAS VEGAS PIN AND PLATE IN TOP OF CURB, SOUTHWEST CORNER OF TENAYA WAY AND BUCKSKIN AVE. NEAR THE PT OF TENAYA WAY.
43	8LV00 1E6W	675.296	F N D CITY OF LAS VEGAS PIN AND PLATE IN TOP OF CURB, SOUTHWEST CORNER OF CRAIG RD. AND LAKE TAHOE ST.	56	8LV00 10SSW6	715.864	F N D CITY OF LAS VEGAS PIN AND PLATE IN TOP OF CURB, NORTHWEST CORNER OF CHEYENNE AVE. AND PIONEER WAY NEAR THE PT OF CHEYENNE AVE.
44	8LV00 3E4	705.796	F N D CITY OF LAS VEGAS PIN AND PLATE IN TOP OF CURB, NORTHWEST CORNER OF CRAIG RD. AND RAINBOW BLVD. NEAR 1/2 DELTA.	57	1LV00 10SWW6	719.759	F N D CITY OF LAS VEGAS PIN AND PLATE IN TOP OF CURB, EAST SIDE OF BUFFALO DR. NEAR 3300 BUFFALO DR.
45	8LV00 3E6	708.634	F N D CITY OF LAS VEGAS PIN AND PLATE IN TOP OF HEADWALL ON WEST SIDE OF U.S. 95 AT CRAIG RD. ±50' WEST OF U.S. 95. SOUTH BOUND TRAFFIC LANE.	58	8LV00 10W4	715.865	F N D CITY OF LAS VEGAS PIN AND PLATE IN TOP OF CURB, SOUTHEAST CORNER OF BUFFALO DR. AND GOWAN RD. NEAR THE PC OF BUFFALO DR.
46	6LV00 3N6	710.013	F N D CITY OF LAS VEGAS PIN AND PLATE IN TOP OF CURB, NORTHWEST CORNER OF TENAYA WAY AND CHIC AVE. NEAR THE PT OF CHIC AVE.	<b>CLARK COUNTY VERTICAL CONTROL v.2003</b>			
47	1LV00 3NEE6	706.839	F N D CITY OF LAS VEGAS PIN AND PLATE IN TOP OF CURB, SOUTHWEST CORNER OF RAINBOW BLVD. AND RED COACH AVE. NEAR THE PT OF RED COACH AVE.	CLARK COUNTY SURVEYOR'S OFFICE 5051 SOUTH PARADISE ROAD LAS VEGAS, NEVADA 89119 (702) 455-0640		CONVERSION FACTOR: METERS X $\left(\frac{3937}{1200}\right)$ = U.S. SURVEY FEET	
				REVISED 2003	SHEET 3 OF 5	<b>20-60 NE</b>	

**FOR REFERENCE ONLY**

**\*2018 BENCHMARK NETWORK ADJUSTMENT SUPERSEDES THE 2003 BENCHMARK BOOK**

No.	STATION	ELEVATION (METERS)	DESCRIPTION	No.	STATION	ELEVATION (METERS)	DESCRIPTION	
59	9LV00 10W6	711.217	F N D CITY OF LAS VEGAS PIN AND PLATE IN TOP OF CURB, NORTH SIDE OF GOWAN RD. OPPOSITE PIONEER WAY.	72	2LV00 13C4	680.507	F N D CITY OF LAS VEGAS PIN AND PLATE IN TOP OF CURB, NORTHWEST CORNER OF AVENIDA CABALLO AND MICHAEL WAY NEAR 1/2 DELTA.	
60	1LV00 11NEE6	691.543	F N D CITY OF LAS VEGAS PIN AND PLATE IN TOP OF CURB, NORTHWEST CORNER OF JONES BLVD. AND GILMORE AVE. NEAR THE PT OF JONES BLVD.	73	2LV00 13N6	681.556	F N D CITY OF LAS VEGAS PIN AND PLATE IN TOP OF CURB, SOUTHEAST CORNER OF MICHAEL WAY AND MOSSMAN AVE.	
61	1LV00 11NWW6	702.929	F N D CITY OF LAS VEGAS PIN AND PLATE IN TOP OF CURB, EAST SIDE OF RAINBOW BLVD. OPPOSITE RIVERDALE WAY.	74	1LV00 13NNW6	689.336	F N D CITY OF LAS VEGAS PIN AND PLATE IN TOP OF CURB, SOUTHEAST CORNER OF CHEYENNE AVE. AND TERRY ST. NEAR THE PT OF CHEYENNE AVE.	
62	8LV00 11SSE6	695.146	F N D CITY OF LAS VEGAS PIN AND PLATE IN TOP OF CURB, NORTHEAST CORNER OF CHEYENNE AVE. AND MAVERICK ST. NEAR THE PT OF MAVERICK ST.	75	5LV00 13S6	679.849	F N D CITY OF LAS VEGAS PIN AND PLATE IN TOP OF CURB, NORTHWEST CORNER OF MICHAEL WAY AND CLEARY CT. NEAR THE PT OF MICHAEL WAY.	
63	8LV00 11SWS	701.491	F N D CITY OF LAS VEGAS PIN AND PLATE IN TOP OF CURB, NORTHEAST CORNER OF CHEYENNE AVE. AND RAINBOW BLVD. NEAR 1/2 DELTA.	76	1LV00 13SWW6	688.206	F N D CITY OF LAS VEGAS PIN AND PLATE IN TOP OF CURB, SOUTHEAST CORNER OF JONES BLVD. AND ALFRED DR.	
64	1LV00 11SWW6	701.089	F N D CITY OF LAS VEGAS PIN AND PLATE IN TOP OF CURB, NORTHEAST CORNER OF RAINBOW BLVD. AND BUCKSKIN AVE. NEAR THE PT OF RAINBOW BLVD.	77	1LV00 13W4	689.693	F N D CITY OF LAS VEGAS PIN AND PLATE IN TOP OF CURB, NORTHEAST CORNER OF PASEO MONTANA AND JONES BLVD. NEAR THE PT OF JONES BLVD.	
65	9LV00 11W4	700.997	F N D CITY OF LAS VEGAS PIN AND PLATE IN TOP OF CURB, NORTHEAST CORNER OF GOWAN RD. AND RAINBOW BLVD. NEAR THE PT OF GOWAN RD.	78	6LV00 14NE6	694.515	F N D CITY OF LAS VEGAS PIN AND PLATE IN TOP OF CURB, NORTH SIDE OF BROOKS AVE. OPPOSITE MAVERICK ST.	
66	9LV00 11W6	698.993	F N D CITY OF LAS VEGAS PIN AND PLATE IN TOP OF CURB, NORTHWEST CORNER OF GOWAN RD. AND SHERMCREST WAY NEAR THE PT OF GOWAN RD.	79	0LV00 14NNW6	699.139	F N D CITY OF LAS VEGAS PIN AND PLATE IN TOP OF CURB, SOUTHEAST CORNER OF CHEYENNE AVE. AND GAREHIME ST. NEAR THE PT OF CHEYENNE AVE.	
67	5LV00 12C4	685.019	F N D CITY OF LAS VEGAS PIN AND PLATE IN TOP OF CURB, NORTHEAST CORNER OF GOWAN RD. AND BRADLEY RD. NEAR THE PT OF BRADLEY RD.	80	6LV00 14SE6	694.888	F N D CITY OF LAS VEGAS PIN AND PLATE IN TOP OF CURB, WEST SIDE OF MAVERICK ST., OPPOSITE CARTIER AVE.	
68	1LV00 12S4	686.121	F N D CITY OF LAS VEGAS PIN AND PLATE IN TOP OF CURB, NORTHEAST CORNER OF CHEYENNE AVE. AND MICHAEL WAY NEAR THE PC OF CHEYENNE AVE.	81	1LV00 13NWW6	691.075	F N D CITY OF LAS VEGAS PIN AND PLATE IN TOP OF CURB, ±100' NORTH AND OPPOSITE OF BROOKS AVE. IN FRONT OF 3050 JONES BLVD.	
69	1LV00 12SWS	691.632	F N D CITY OF LAS VEGAS PIN AND PLATE IN TOP OF CURB, NORTHEAST CORNER OF CHEYENNE AVE. AND JONES BLVD. NEAR THE PC OF CHEYENNE AVE.	82	5LV00 15NWS	721.766	F N D CITY OF LAS VEGAS PIN AND PLATE IN TOP OF CURB, SOUTHEAST CORNER OF CHEYENNE AVE. AND BUFFALO DR. NEAR THE PC OF CHEYENNE AVE.	
70	1LV00 12SWW6	692.176	F N D CITY OF LAS VEGAS PIN AND PLATE IN TOP OF CURB, EAST SIDE OF JONES BLVD. ±250' NORTH OF SANTA CATALINA WAY.	<b>CLARK COUNTY VERTICAL CONTROL v.2003</b>				
71	9LV00 12W6	688.543	F N D CITY OF LAS VEGAS PIN AND PLATE IN TOP OF CURB, NORTHWEST CORNER OF GOWAN RD. AND MIRAMAR DR. NEAR 5804 GOWAN RD.	CLARK COUNTY SURVEYOR'S OFFICE 5051 SOUTH PARADISE ROAD LAS VEGAS, NEVADA 89119 (702) 455-0640		CONVERSION FACTOR: METERS X $\left(\frac{3937}{1200}\right)$ = U.S. SURVEY FEET		
						REVISED 2003	SHEET 4 OF 5	<b>20-60 NE</b>

FOR REFERENCE ONLY

\*2018 BENCHMARK NETWORK ADJUSTMENT SUPERSEDES THE 2003 BENCHMARK BOOK

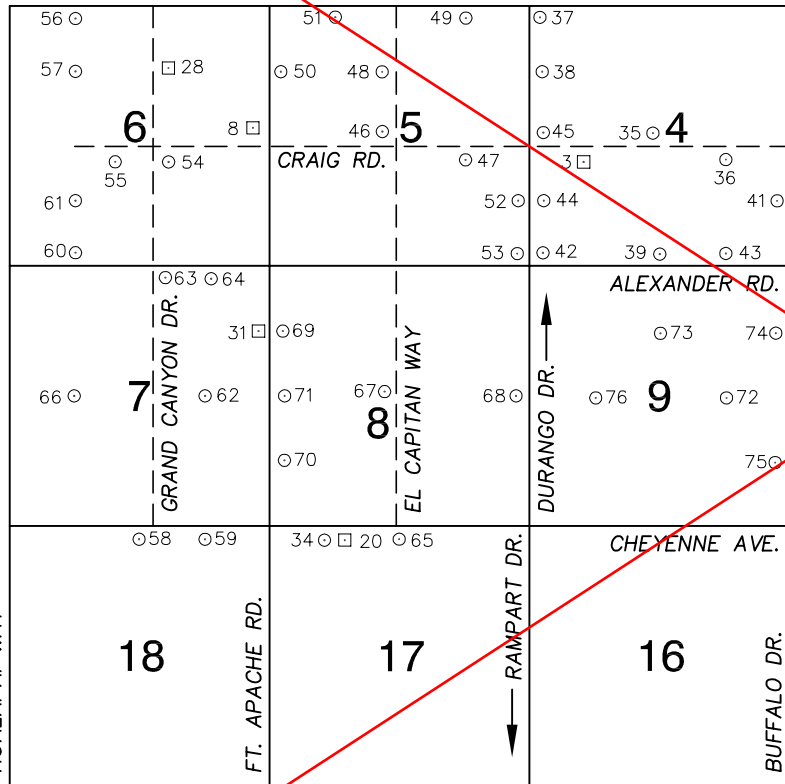
No.	STATION	ELEVATION (METERS)	DESCRIPTION	No.	STATION	ELEVATION (METERS)	DESCRIPTION
83	5LV00 1C4	677.381	FINISHED CITY OF LAS VEGAS PIN AND PLATE IN TOP OF CURB, SOUTHWEST CORNER OF CRAIG RD. AND BRADLEY RD. NEAR 1/3 DELTA OF CRAIG RD., "NOT STAMPED".	96			
84	7C00 2E6 1997	696.586	SET RIVET AND ROUND ALUMINUM PLATE IN TOP OF CURB, NORTH CURB LINE OF CRAIG RD. JUST WEST OF A DRIVEWAY LEADING INTO 4402 CRAIG RD.	97			
85				98			
86				99			
87				100			
88				101			
89				102			
90				103			
91				104			
92				105			
93				106			
94				<b>CLARK COUNTY VERTICAL CONTROL v.2003</b>			
95				CLARK COUNTY SURVEYOR'S OFFICE 5051 SOUTH PARADISE ROAD LAS VEGAS, NEVADA 89119 (702) 455-0640		CONVERSION FACTOR: METERS X $\left(\frac{3937}{1200}\right)$ = U.S. SURVEY FEET	
				REVISED 2003	SHEET 5 OF 5	<b>20-60 NE</b>	

FOR REFERENCE ONLY

\*2018 BENCHMARK NETWORK ADJUSTMENT SUPERSEDES THE 2003 BENCHMARK BOOK

Township 20 South, Range 60 East  
Northwest Quarter

LONE MOUNTAIN RD.



SMOKE RANCH RD.

NORTH AMERICAN VERTICAL  
DATUM OF 1988  
- ALL ELEVATIONS IN METERS -

No.	STATION	ELEVATION (METERS)	DESCRIPTION
1			LOST 2003
2			LOST 2003
3	1C00 4W6	726.792	F N D RIVET AND SQUARE ALUMINUM PLATE IN AN ELECTRICAL TRANSFORMER PAD, 175' WEST OF AL GARRISON ST. ON THE SOUTH SIDE OF CRAIG RD.
4			LOST 2003
5			LOST 2003
6			LOST 2003
7			LOST 2003
8	1C00 6E4	759.465	F N D RIVET AND SQUARE ALUMINUM PLATE IN SOUTHWEST CORNER OF AN ELECTRICAL TRANSFORMER PAD, 210' WEST OF FORT APACHE RD. AT 9245 CRAIG RD. ON THE NORTH SIDE OF CRAIG RD.
9			LOST 2003
10			LOST 2003
11			LOST 2003

CLARK COUNTY VERTICAL CONTROL v.2003

CLARK COUNTY SURVEYOR'S OFFICE  
5051 SOUTH PARADISE ROAD  
LAS VEGAS, NEVADA 89119  
(702) 455-0640

CONVERSION FACTOR:  
METERS X  $\left(\frac{3937}{1200}\right)$  = U.S. SURVEY FEET

REVISED  
09/01/2006

SHEET  
1 OF 4

20-60  
NW

**FOR REFERENCE ONLY**

**\*2018 BENCHMARK NETWORK ADJUSTMENT SUPERSEDES THE 2003 BENCHMARK BOOK**

No.	STATION	ELEVATION (METERS)	DESCRIPTION	No.	STATION	ELEVATION (METERS)	DESCRIPTION
12			LOST 2003	25			LOST 2003
13			LOST 2003	26			LOST 2003
14			LOST 2003	27			LOST 2003
15			LOST 2003	28	1C00 6N6	787.765	F N D RIVET AND SQUARE ALUMINUM PLATE IN A CONCRETE MONUMENT, 25' SOUTH AND 50' EAST OF GRAND CANYON DR. AND RED COACH AVE. 1' WEST OF AN ELECTRICAL VAULT.
16			LOST 2003	29			LOST 2003
17			LOST 2003	30			LOST 2003
18			LOST 2003	31	1C00 7NEE6	773.216	F N D RIVET AND SQUARE ALUMINUM PLATE IN A CONCRETE MONUMENT, 35' SOUTH AND 50' WEST OF FORT APACHE RD. AND GILMORE AVE.
19			LOST 1992	32			LOST 2003
20	1C00 17NNW6	768.036	F N D RIVET AND SQUARE ALUMINUM PLATE IN TOP OF CURB, ON THE SOUTH SIDE OF CHEYENNE AVE. AND THE EXTENDED ALIGNMENT OF CAMPBELL RD.	33			LOST 2003
21			LOST 2003	34	8LV00 17NNW6	768.417	F N D CITY OF LAS VEGAS RIVET AND ALUMINUM PLATE IN TOP OF CURB, SOUTHWEST CORNER OF CHEYENNE AVE. AND CAMPBELL RD.
22			LOST 1992	35	8LV00 4C4	722.067	F N D CITY OF LAS VEGAS RIVET AND ALUMINUM PLATE IN TOP OF CURB, NORTHWEST CORNER OF CRAIG RD. AND CIMARRON RD. NEAR 1/2 DELTA.
23			LOST 2003	<b>CLARK COUNTY VERTICAL CONTROL v.2003</b>			
24			LOST 2003	CLARK COUNTY SURVEYOR'S OFFICE 5051 SOUTH PARADISE ROAD LAS VEGAS, NEVADA 89119 (702) 455-0640			CONVERSION FACTOR: METERS X $\left(\frac{3937}{1200}\right)$ = U.S. SURVEY FEET
				REVISED 2003	SHEET 2 OF 4	<b>20-60 NW</b>	



**FOR REFERENCE ONLY**

**\*2018 BENCHMARK NETWORK ADJUSTMENT SUPERSEDES THE 2003 BENCHMARK BOOK**

No.	STATION	ELEVATION (METERS)	DESCRIPTION	No.	STATION	ELEVATION (METERS)	DESCRIPTION
36	8LV00 4E6	718.083	F N D CITY OF LAS VEGAS RIVET AND ALUMINUM PLATE IN CONCRETE CYLINDER, SOUTHEAST CORNER OF CRAIG RD. AND CONOUGH LN. ±75' EAST OF CONOUGH LN.	49	8LV00 5NNE6	740.461	F N D CITY OF LAS VEGAS RIVET AND ALUMINUM PLATE IN TOP OF CURB, SOUTHWEST CORNER OF LONE MOUNTAIN RD. AND RILEY ST. NEAR THE PT OF RILEY ST.
37	8LV00 4NWS	734.125	F N D CITY OF LAS VEGAS RIVET AND ALUMINUM PLATE IN TOP OF CURB, SOUTHEAST CORNER OF LONE MOUNTAIN RD. AND DURANGO DR. NEAR THE PT OF LONE MOUNTAIN RD.	50	6LV00 5NWW6	759.031	F N D BLM BRASS CAP IN WELL, FORT APACHE RD. AND RED COACH AVE. ALIGNMENT.
38	0LV00 4NWW6	731.271	F N D CITY OF LAS VEGAS RIVET AND ALUMINUM PLATE IN TOP OF CURB, NORTHEAST CORNER OF DURANGO DR. AND RED COACH AVE. NEAR THE PT OF DURANGO DR.	51	8LV00 5NNW6	754.749	F N D CITY OF LAS VEGAS RIVET AND ALUMINUM PLATE IN CONCRETE PAD, SOUTHEAST CORNER OF LONE MOUNTAIN RD. AND CAMPBELL RD. ±100' EAST OF CAMPBELL RD.
39	6LV00 4S4	722.298	F N D CITY OF LAS VEGAS RIVET AND ALUMINUM PLATE IN TOP OF CURB, NORTHEAST CORNER OF ALEXANDER RD. AND CIMARRON RD. NEAR THE PC OF ALEXANDER RD.	52	0LV00 5SEE6	730.541	F N D CITY OF LAS VEGAS RIVET AND ALUMINUM PLATE IN TOP OF CURB, WEST SIDE OF ISLAND AT DURANGO DR. ±320' NORTH OF FLORINE AVE.
40			LOST 2006	53	0LV00 5SES	732.411	F N D CITY OF LAS VEGAS RIVET AND ALUMINUM PLATE IN TOP OF CURB, NORTHWEST CORNER OF ALEXANDER RD. AND DURANGO DR. NEAR 1/2 DELTA.
41	1LV00 4SEE6	714.789	F N D CITY OF LAS VEGAS RIVET AND ALUMINUM PLATE IN TOP OF CURB, SOUTHWEST CORNER OF BUFFALO DR. AND HICKAM AVE. NEAR 1/2 DELTA.	54	8LV00 6C4	779.976	F N D CITY OF LAS VEGAS RIVET AND ALUMINUM PLATE IN CONCRETE PAD, SOUTHEAST CORNER OF CRAIG RD. AND GRAND CANYON DR. ±50' SOUTH OF CRAIG RD.
42	1LV00 4SES	713.808	F N D CITY OF LAS VEGAS RIVET AND ALUMINUM PLATE IN TOP OF CURB, NORTHWEST CORNER OF BUFFALO DR. AND ALEXANDER RD. NEAR 1/2 DELTA.	55	8LV00 6C4W	787.369	F N D CITY OF LAS VEGAS RIVET AND ALUMINUM PLATE IN TOP OF CURB, SOUTHEAST CORNER OF CRAIG RD. AND JENSEN ST. NEAR THE PC OF JENSEN ST.
43	6LV00 4SSE6	718.315	F N D CITY OF LAS VEGAS RIVET AND ALUMINUM PLATE IN TOP OF CURB, NORTHWEST CORNER OF ALEXANDER RD. AND POPPY FIELDS DR. NEAR THE PT OF ALEXANDER RD.	56	8LV00 6NNW6	808.394	F N D CITY OF LAS VEGAS RIVET AND ALUMINUM PLATE IN CONCRETE CYLINDER, SOUTHWEST CORNER OF LONE MOUNTAIN RD. AND CONQUISTADOR ST.
44	0LV00 4SWW6	730.026	F N D BRASS CAP "PLS 7008" AT DURANGO DR. AND HICKAM AVE. ALIGNMENT.	57	8LV00 6NW6	804.439	F N D CITY OF LAS VEGAS RIVET AND ALUMINUM PLATE IN CONCRETE PAD, SOUTHEAST CORNER OF CONQUISTADOR ST. AND RED COACH AVE.
45	8LV00 4W4	729.980	F N D CITY OF LAS VEGAS RIVET AND ALUMINUM PLATE IN TOP OF CURB, NORTHEAST CORNER OF CRAIG RD. AND DURANGO DR. NEAR THE PC OF CRAIG RD.	58	6LV00 18N4	805.793	F N D CITY OF LAS VEGAS RIVET AND ALUMINUM PLATE IN TOP OF CURB, SOUTH SIDE OF CHEYENNE AVE. OPPOSITE GRAND CANYON DR.
46	8LV00 5C4	742.448	F N D CITY OF LAS VEGAS RIVET AND ALUMINUM PLATE IN CONCRETE PAD, NORTH SIDE OF CRAIG RD. ±30' WEST OF EL CAPITAN WAY.	59	8LV00 18NNE6	790.161	F N D CITY OF LAS VEGAS RIVET AND ALUMINUM PLATE IN TOP OF CURB, SOUTH SIDE OF CHEYENNE AVE. ±100' EAST AND OPPOSITE OF MOUNTAIN VIEW LUTHERAN CHURCH.
47	8LV00 5E6	735.924	F N D CITY OF LAS VEGAS RIVET AND ALUMINUM PLATE IN CONCRETE CYLINDER, SOUTHEAST CORNER OF CRAIG RD. AND RILEY ST. NEAR 1/2 DELTA OF 6' WALL.	<b>CLARK COUNTY VERTICAL CONTROL v.2003</b>			
48	8LV00 5N6	743.134	F N D CITY OF LAS VEGAS RIVET AND ALUMINUM PLATE IN CONCRETE CYLINDER, NORTHWEST CORNER OF EL CAPITAN WAY AND RED COACH AVE.	CLARK COUNTY SURVEYOR'S OFFICE 5051 SOUTH PARADISE ROAD LAS VEGAS, NEVADA 89119 (702) 455-0640			CONVERSION FACTOR: METERS x $\left(\frac{3937}{1200}\right)$ = U.S. SURVEY FEET
			REVISED 09/01/2006		SHEET 3 OF 4		20-60 NW



**FOR REFERENCE ONLY**

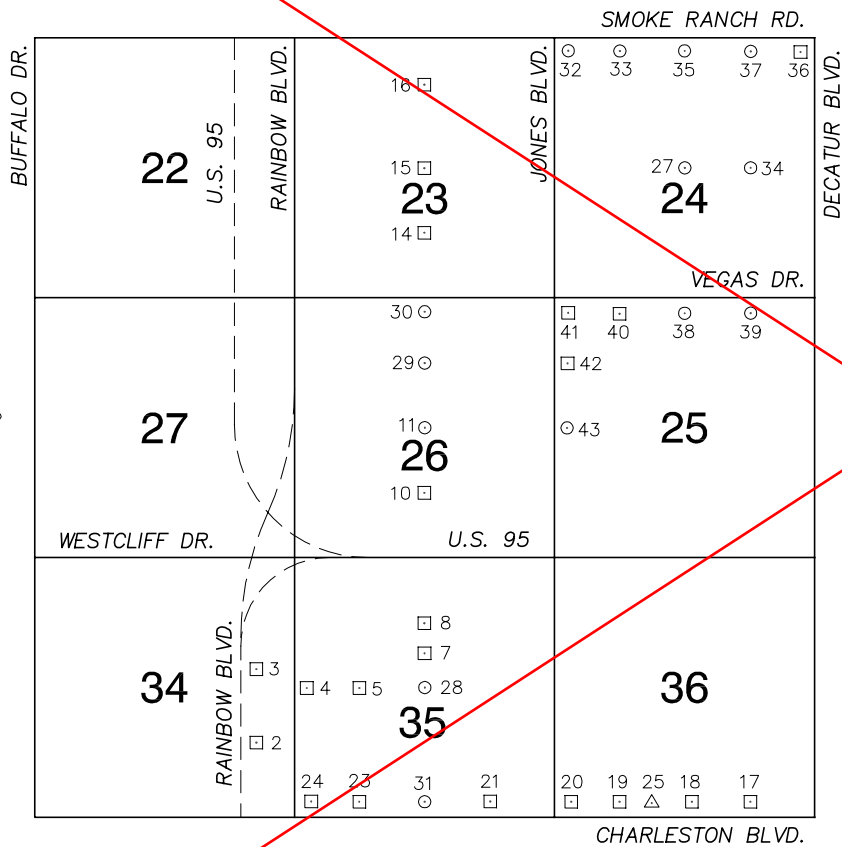
**\*2018 BENCHMARK NETWORK ADJUSTMENT SUPERSEDES THE 2003 BENCHMARK BOOK**

No.	STATION	ELEVATION (METERS)	DESCRIPTION	No.	STATION	ELEVATION (METERS)	DESCRIPTION	
60	8LV00 6SSW6	806.307	F N D CITY OF LAS VEGAS RIVET AND ALUMINUM PLATE IN CONCRETE CYLINDER, NORTHWEST CORNER OF ALEXANDER RD. AND CONQUISTADOR ST.	73	8LV00 9N6	724.866	F N D CITY OF LAS VEGAS RIVET AND ALUMINUM PLATE IN TOP OF CURB, NORTHEAST CORNER OF CIMARRON RD. AND GILMORE AVE. NEAR THE PT OF CIMARRON RD.	
61	8LV00 6SW6	797.711	F N D CITY OF LAS VEGAS RIVET AND ALUMINUM PLATE IN CONCRETE CYLINDER, NORTHWEST CORNER OF CONQUISTADOR ST. AND HICKAM AVE.	74	1LV00 9NEE6	714.052	F N D CITY OF LAS VEGAS RIVET AND ALUMINUM PLATE IN CONCRETE PAD, SOUTHWEST CORNER OF BUFFALO DR. AND CONSTANTINOPLE AVE ±80' SOUTH OF CONSTANTINOPLE AVE.	
62	9LV00 7E6	781.970	F N D CITY OF LAS VEGAS RIVET AND ALUMINUM PLATE IN TOP OF CURB, SOUTHWEST CORNER OF GOWAN RD. AND ST. AIDEN STREET, NEAR THE PC OF GOWAN RD.	75	8LV00 9SEE6	718.913	F N D CITY OF LAS VEGAS RIVET AND ALUMINUM PLATE IN TOP OF CURB, NORTHWEST CORNER OF BUFFALO DR. AND BUCKSKIN AVE. NEAR THE PT OF BUFFALO DR.	
63	9LV00 7N4	792.858	F N D CITY OF LAS VEGAS RIVET AND ALUMINUM PLATE IN TOP OF CURB, SOUTHEAST CORNER OF ALEXANDER RD. AND GRAND CANYON DR. NEAR PC OF GRAND CANYON DR.	76	9LV00 9W6	733.491	F N D CITY OF LAS VEGAS RIVET AND ALUMINUM PLATE IN TOP OF CURB, NORTHWEST CORNER OF GOWAN RD. AND WARM BREEZE DR. NEAR THE PT OF GOWAN RD.	
64	9LV00 7NNE6	780.959	F N D CITY OF LAS VEGAS RIVET AND ALUMINUM PLATE IN TOP OF CURB, SOUTH SIDE OF ALEXANDER RD. OPPOSITE TEE PEE LN.	77				
65	8LV00 17N4	759.992	F N D CITY OF LAS VEGAS RIVET AND ALUMINUM PLATE IN TOP OF CURB, SOUTH SIDE OF CHEYENNE AVE. OPPOSITE EL CAPITAN WAY.	78				
66	9LV00 7W6	802.072	F N D CITY OF LAS VEGAS RIVET AND ALUMINUM PLATE IN TOP OF CURB, NORTHEAST CORNER OF GOWAN RD. AND JENSEN ST. NEAR THE PC OF GOWAN RD.	79				
67	8LV00 8C4	752.978	F N D CITY OF LAS VEGAS RIVET AND ALUMINUM PLATE IN TOP OF CURB, NORTHWEST CORNER OF GOWAN RD. AND EL CAPITAN WAY, NEAR THE PC OF GOWAN RD.	80				
68	9LV00 8E4	739.102	F N D CITY OF LAS VEGAS RIVET AND ALUMINUM PLATE IN TOP OF CURB, NORTHWEST CORNER OF GOWAN RD. AND DURANGO RD. NEAR THE PC OF GOWAN RD.	81				
69	6LV00 8NWW6	771.837	F N D CITY OF LAS VEGAS RIVET AND ALUMINUM PLATE IN TOP OF CURB, SOUTHEAST CORNER OF FORT APACHE RD. AND GILMORE AVE. NEAR THE PC OF FORT APACHE RD.	82				
70	6LV00 8SWW6	774.754	F N D CITY OF LAS VEGAS RIVET AND ALUMINUM PLATE IN TOP OF CURB, NORTHEAST CORNER OF FORT APACHE RD. AND BUCKSKIN AVE. NEAR THE PC OF BUCKSKIN AVE.	83				
71	6LV00 8W4	772.422	F N D CITY OF LAS VEGAS RIVET AND ALUMINUM PLATE IN TOP OF CURB, SOUTHEAST CORNER OF GOWAN RD. AND FORT APACHE RD. NEAR THE PC OF GOWAN RD.	<b>CLARK COUNTY VERTICAL CONTROL v.2003</b>				
72	9LV00 9E6	721.084	F N D CITY OF LAS VEGAS RIVET AND ALUMINUM PLATE IN TOP OF CURB, NORTH SIDE OF GOWAN RD. OPPOSITE CONOUGH LN.	CLARK COUNTY SURVEYOR'S OFFICE 5051 SOUTH PARADISE ROAD LAS VEGAS, NEVADA 89119 (702) 455-0640		CONVERSION FACTOR: METERS X $\left(\frac{3937}{1200}\right)$ = U.S. SURVEY FEET		
						REVISED 2003	SHEET 4 OF 4	<b>20-60 NW</b>

FOR REFERENCE ONLY

\*2018 BENCHMARK NETWORK ADJUSTMENT SUPERSEDES THE 2003 BENCHMARK BOOK

Township 20 South, Range 60 East  
Southeast Quarter



NORTH AMERICAN VERTICAL  
DATUM OF 1988  
- ALL ELEVATIONS IN METERS -

No.	STATION	ELEVATION (METERS)	DESCRIPTION
1			LOST 2003
2	7C00 34SE6	733.407	F N D RIVET AND SQUARE ALUMINUM PLATE IN TOP OF CURB, NORTHEAST QUADRANT OF RAINBOW BLVD. AND MAIN ENTRANCE TO THE HOME DEPOT, ±12' SOUTH OF A DROP INLET.
3	7C00 34E6	733.501	F N D RIVET AND SQUARE ALUMINUM PLATE IN TOP OF CURB, NORTHEAST CORNER OF RAINBOW BLVD. AND ALTA DR. NEAR 1/4 DELTA ON RAINBOW BLVD.
4	7C00 35W4	728.007	F N D RIVET AND SQUARE ALUMINUM PLATE IN TOP OF CURB, NORTHEAST CORNER OF ALTA DR. AND LORENZI ST. NEAR THE PC OF ALTA DR.
5	7C00 35W6	720.565	F N D RIVET AND SQUARE ALUMINUM PLATE IN TOP OF CURB, NORTHEAST CORNER OF ALTA DR. AND TILTON LN. NEAR THE PC OF ALTA DR.
6			LOST 2003
7	CLV 06035B1	712.973	F N D CITY OF LAS VEGAS PIN AND PLATE IN TOP OF CURB, NORTHEAST CORNER OF TORREY PINES DR. AND ARLINGTON AVE. NEAR THE PC OF TORREY PINES DR. STAMPED CLV BM# 06035 B1".
8	7C00 35N6	712.179	F N D RIVET AND SQUARE ALUMINUM PLATE IN TOP OF CURB, NORTHEAST CORNER OF TORREY PINES DR. AND ELTON AVE. NEAR THE PC OF TORREY PINES DR.
9			LOST 2003
10	7C00 26S6	712.196	F N D RIVET AND SQUARE ALUMINUM PLATE IN TOP OF CURB, NORTHEAST CORNER OF TORREY PINES DR. AND HILL VIEW AVE.
11	2LV00 26C4	710.265	F N D CITY OF LAS VEGAS PIN AND PLATE IN TOP OF CURB, SOUTHEAST CORNER OF TORREY PINES DR. AND WASHINGTON AVE. NEAR THE PC OF WASHINGTON AVE.

CLARK COUNTY VERTICAL CONTROL v.2003

CLARK COUNTY SURVEYOR'S OFFICE  
5051 SOUTH PARADISE ROAD  
LAS VEGAS, NEVADA 89119  
(702) 455-0640

CONVERSION FACTOR:  
METERS X  $\left(\frac{3937}{1200}\right)$  = U.S. SURVEY FEET

REVISED 2003 SHEET 1 OF 3 20-60 SE

FOR REFERENCE ONLY

**\*2018 BENCHMARK NETWORK ADJUSTMENT SUPERSEDES THE 2003 BENCHMARK BOOK**

No.	STATION	ELEVATION (METERS)	DESCRIPTION	No.	STATION	ELEVATION (METERS)	DESCRIPTION	
12			LOST 2003	25	K 367 1968	691.413	F N D USC&GS BRASS CAP, STAMPED "K367, RESET 1968", LOCATED IN NORTH TOP OF CURB OF CHARLESTON BLVD. 300' EAST OF UPLAND BLVD.	
13			LOST 2003	26			LOST 2003	
14	7C00 23S6	704.598	F N D RIVET AND SQUARE ALUMINUM PLATE IN TOP OF CURB, NORTHEAST CORNER OF TORREY PINES DR. AND STARCREST DR. AT A STREET LIGHT POLE.	27	2LV00 24C4	679.725	F N D CITY OF LAS VEGAS RIVET AND ALUMINUM PLATE IN TOP OF CURB, SOUTHEAST CORNER OF LAKE MEAD BLVD. AND MICHAEL WAY, NEAR THE PC OF MICHAEL WAY.	
15	7C00 23C4	702.485	F N D RIVET AND SQUARE ALUMINUM PLATE IN TOP OF CURB, SOUTHWEST CORNER OF TORREY PINES DR. AND LAKE MEAD BLVD. NEAR THE PC OF TORREY PINES DR.	28	7C00 35C4 1997	712.969	S E T RIVET AND ROUND ALUMINUM PLATE IN TOP OF CURB, NORTHEAST CORNER OF TORREY PINES DR. AND ALTA DR. NEAR THE PC OF TORREY PINES DR.	
16	7C00 23N6	699.818	F N D RIVET AND SQUARE ALUMINUM PLATE IN TOP OF CURB, SOUTHWEST CORNER OF TORREY PINES DR. AND LITTLE PINES WAY.	29	7C00 26N6 1997	710.348	S E T RIVET AND ROUND ALUMINUM PLATE IN TOP OF CURB, NORTHEAST CORNER OF TORREY PINES DR. AND CARMEN BLVD. NEAR THE PC OF TORREY PINES DR.	
17	7C00 36SSE6	676.376	F N D RIVET AND SQUARE ALUMINUM PLATE IN TOP OF CURB, NORTHEAST CORNER OF CHARLESTON BLVD. AND BRUSH ST. NEAR THE PC OF CHARLESTON BLVD.	30	7C00 26N4 1997	707.312	S E T RIVET AND ROUND ALUMINUM PLATE IN TOP OF CURB, SOUTHEAST CORNER OF TORREY PINES DR. AND VEGAS DR. NEAR THE PC OF TORREY PINES DR.	
18	7C00 36S4	683.577	F N D RIVET AND SQUARE ALUMINUM PLATE IN TOP OF CURB, NORTHEAST CORNER OF CHARLESTON BLVD. AND MOHAWK ST. NEAR THE PC OF CHARLESTON BLVD.	31	8C00 35S4 1998	714.773	S E T RIVET AND ROUND ALUMINUM PLATE IN TOP OF CURB, NORTHEAST CORNER OF CHARLESTON BLVD. AND TORREY PINES DR. NEAR THE PC OF CHARLESTON BLVD.	
19	7C00 36SSW6	692.238	F N D RIVET AND SQUARE ALUMINUM PLATE IN TOP OF CURB, NORTHEAST CORNER OF CHARLESTON BLVD. AND UPLAND BLVD. NEAR THE PC OF CHARLESTON BLVD.	32	1LV00 24NWS	688.845	F N D CITY OF LAS VEGAS RIVET AND ALUMINUM PLATE IN TOP OF CURB, SOUTHEAST CORNER OF SMOKE RANCH RD. AND JONES BLVD.	
20	0LV00 36SWS	698.097	F N D CITY OF LAS VEGAS PIN AND PLATE IN TOP OF CURB, NORTHEAST CORNER OF CHARLESTON BLVD. AND JONES BLVD. NEAR THE PC OF CHARLESTON BLVD., "NOT STAMPED"	33	2LV00 24NNW6	682.954	F N D CITY OF LAS VEGAS RIVET AND ALUMINUM PLATE IN TOP OF CURB, SOUTHEAST CORNER OF SMOKE RANCH RD. AND WINWOOD ST.	
21	7C00 35SSE6	703.861	F N D RIVET AND SQUARE ALUMINUM PLATE IN TOP OF CURB, NORTHEAST CORNER OF CHARLESTON BLVD. AND SALEM DR. NEAR THE PC OF CHARLESTON BLVD.	34	2LV00 24E6	674.791	F N D CITY OF LAS VEGAS RIVET AND ALUMINUM PLATE IN TOP OF CURB, SOUTHEAST CORNER OF LAKE MEAD BLVD. AND LEONARD LN. NEAR 1/2 DELTA.	
22			LOST 2003	35	2LV00 24N4	678.807	F N D CITY OF LAS VEGAS RIVET AND ALUMINUM PLATE IN TOP OF CURB, SOUTHEAST CORNER OF SMOKE RANCH RD. AND MICHAEL WAY, NEAR 1/2 DELTA.	
23	7C00 35SSW6	723.098	F N D RIVET AND SQUARE ALUMINUM PLATE IN TOP OF CURB, NORTHEAST CORNER OF CHARLESTON BLVD. AND REDWOOD ST. NEAR THE PC OF CHARLESTON BLVD.	<b>CLARK COUNTY VERTICAL CONTROL v.2003</b>				
24	2LV00 35SWS	728.429	F N D CITY OF LAS VEGAS PIN AND PLATE IN TOP OF CURB, NORTHEAST CORNER OF CHARLESTON BLVD. AND LORENZI ST. NEAR THE PC OF CHARLESTON BLVD.	CLARK COUNTY SURVEYOR'S OFFICE 5051 SOUTH PARADISE ROAD LAS VEGAS, NEVADA 89119 (702) 455-0640		CONVERSION FACTOR: METERS X $\left(\frac{3937}{1200}\right)$ = U.S. SURVEY FEET		
						REVISED 2003	SHEET 2 OF 3	<b>20-60 SE</b>

**FOR REFERENCE ONLY**

**\*2018 BENCHMARK NETWORK ADJUSTMENT SUPERSEDES THE 2003 BENCHMARK BOOK**

No.	STATION	ELEVATION (METERS)	DESCRIPTION	No.	STATION	ELEVATION (METERS)	DESCRIPTION
36	1LV00 24NES	672.033	F N D CITY OF LAS VEGAS RIVET AND ALUMINUM PLATE IN TOP OF CURB, SOUTHWEST CORNER OF DECATUR BLVD. AND SMOKE RANCH RD. NEAR THE PT OF DECATUR BLVD.	49			
37	2LV00 24NNE6	675.560	F N D CITY OF LAS VEGAS RIVET AND ALUMINUM PLATE IN TOP OF CURB, SOUTHWEST CORNER OF SMOKE RANCH RD. AND LEONARD LN. NEAR THE PC OF SMOKE RANCH RD.	50			
38	2LV00 25N4	683.352	F N D CITY OF LAS VEGAS RIVET AND ALUMINUM PLATE IN TOP OF CURB, SOUTHWEST CORNER OF VEGAS DR. AND MICHAEL WAY NEAR 1/2 DELTA	51			
39	2LV00 25NNE6	678.048	F N D CITY OF LAS VEGAS RIVET AND ALUMINUM PLATE IN TOP OF CURB, SOUTH SIDE OF VEGAS DR. OPPOSITE LEONARD LN.	52			
40	2LV00 25NNW6	689.876	F N D CITY OF LAS VEGAS RIVET AND ALUMINUM PLATE IN TOP OF CURB, SOUTHWEST CORNER OF VEGAS DR. AND SAYLOR WAY, NEAR THE PC OF VEGAS DR.	53			
41	0LV00 25NWS	694.409	F N D CITY OF LAS VEGAS RIVET AND ALUMINUM PLATE IN TOP OF CURB, SOUTHWEST CORNER OF JONES BLVD. AND VEGAS DR. NEAR THE PT OF JONES BLVD.	54			
42	0LV00 25NWW6	698.522	F N D CITY OF LAS VEGAS RIVET AND ALUMINUM PLATE IN TOP OF CURB, SOUTHWEST CORNER OF JONES BLVD. AND CARMEN BLVD. NEAR THE PC OF JONES BLVD.	55			
43	1LV00 25W4	700.306	F N D CITY OF LAS VEGAS RIVET AND ALUMINUM PLATE IN TOP OF CURB, SOUTHWEST CORNER OF JONES BLVD. AND WASHINGTON AVE. NEAR THE PT OF WASHINGTON AVE.	56			
44				57			
45				58			
46				59			
47				<b>CLARK COUNTY VERTICAL CONTROL v.2003</b>			
48				CLARK COUNTY SURVEYOR'S OFFICE 5051 SOUTH PARADISE ROAD LAS VEGAS, NEVADA 89119 (702) 455-0640		CONVERSION FACTOR: METERS X $\left(\frac{3937}{1200}\right)$ = U.S. SURVEY FEET	
				REVISED 2003	SHEET 3 OF 3	<b>20-60 SE</b>	